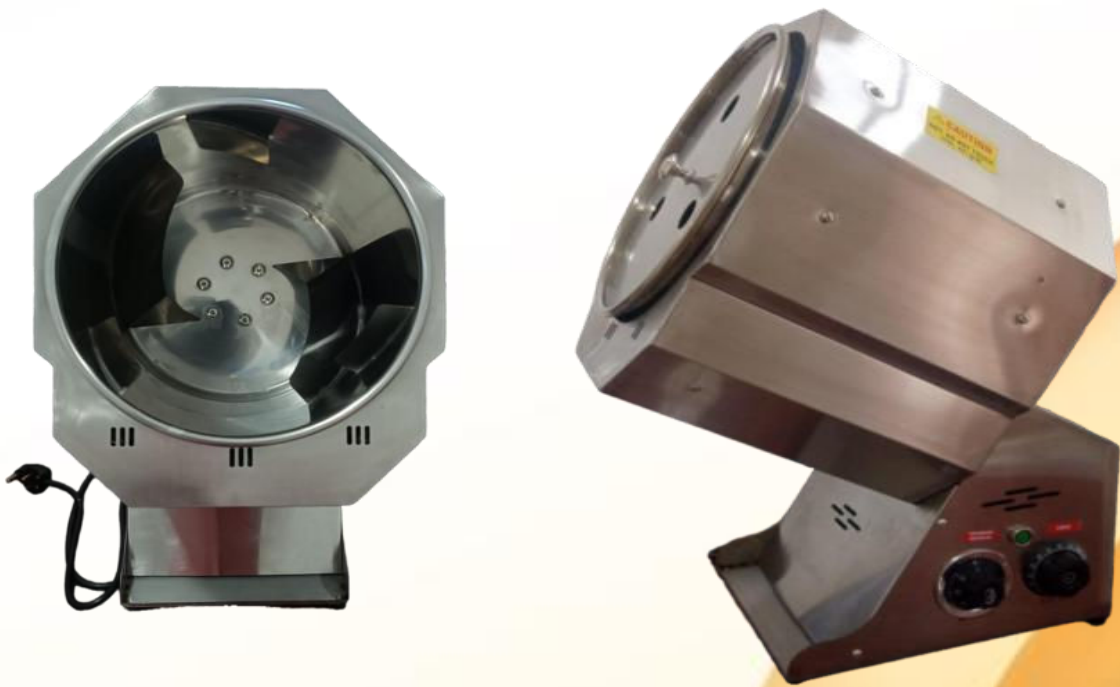


# < spectra >

## Chocolate Roaster Mini

*Catalogue – Spectra Roaster Mini*



Issue: v1 02 DEC 2024

## SPECTRA ROASTER MINI



*Includes Patented and Patent Pending features. Product may differ slightly from the picture above.*

### **An effective way to roast your cocoa**

Roasting is the first step of a successful Bean to Bar chocolate.

The process of roasting is to send dry hot air and that covers the cacao at a set temperature of 150° C (300° F) while the drum rotates at a steady slow speed, and this way all the beans are roasted evenly and properly.

Cocoa beans are roasted for a variety of reasons such as Flavor, Texture, Color, Safety and Antinutrients.

The roasting is first process in Bean to Bar chocolate making for a reason as it brings out the full flavor and aroma of the Cocoa which we all love and enjoy, and our Spectra Roaster Mini does just that.



This machine is ideally suited to roast food items including nuts, like almonds, cashews, hazelnuts, pistachios, peanuts, coffee beans, seeds, fox nuts etc.

Not only can one control the temperature at which hot air is blown you are able to set a timer for how long you want to run the Spectra Roaster Mini. This small and compact design is an idea option and take up less space in your work area.

## Features

- Table-top model, heavy-duty machine ideally suited to the needs of Bakeries, Hoteliers, Chocolatiers, etc.
- Temperature Controller for making fine quality chocolates etc.
- All the crucial components - Motor, Bearings, Switch-gear, etc. - are sourced from world-class suppliers
- This motorised roaster has a revolving Drum ensuring even roasting of the product.
- Crafted from food grade stainless steel, it comes fitted with a cylindrical drum of diameter 10", depth 10" and a lid.
- The Spectra Roaster Mini has a production capacity of Capacity of 1-2 kgs batch size depending on the item being roasted and 4-5 kgs per hour.
- Equipped with a Timer to give precise roasting.
- Equipped with an electric heaters and dial-type Temperature Controller.
- The indicator light is to show that the heating is ON.
- Its small footprint allows it to be placed on a table.
- SS 304 grade body.
- NO NEED TO BUY ANY ADD ONs and ATTACHMENTS - all are included
- Ergonomic design
- We have readily available spare parts that can ship worldwide and give you peace of mind
- Removal of the hot product is easy as it can be tilted with its safe handle.

## Specifications

- Geared Motor Power 60 W
- Power Supply of 2.5 KW in 220V single phase.
- Comes with built in temperature controller.
- Body and drum are Stainless Steel.
- The Heating Type is Electric heating.
- Weight – Approximate 11kgs
- Dimensions - 43 x 29 x 55 cm LBH
- *(Note: All specifications are subject to change without notice as products are constantly improved)*